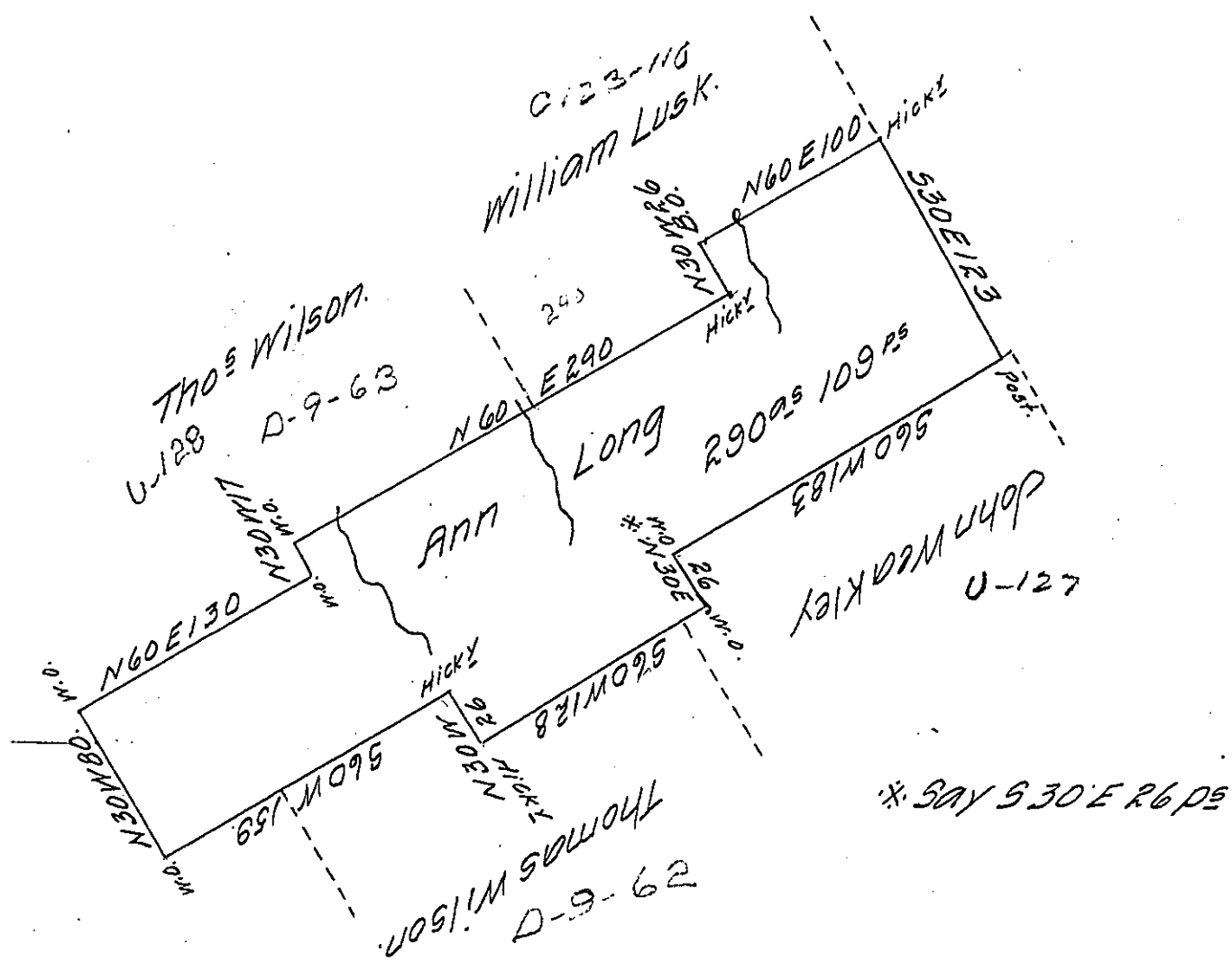


FORM NO. 1.



The Draught of a tract of Land situate in Nittany Valley Walker Township, formerly Northumberland, now Centre County Containing two hundred and ninety Acres, one hundred and nine perches and the allowance of six per cent, surveyed the 6th day of November 1769 in pursuance of an Application to Ann Long dated the 5th day of May 1769, N^o 3192 - Examined October 1810.

W^m Kerr D.S.

To Andrew Porter Esquire,
Surveyor General of Pennsylvania }

IN TESTIMONY that the above is a copy of the original remaining on file in the Department of Internal Affairs of Pennsylvania, made conformably to an Act of Assembly approved the 16th day of February 1833, I have hereunto set my hand and caused the Seal of said Department to be affixed at Harrisburg, this twenty eighth day of January 1907.

Edward P. Brown
Secretary of Internal Affairs.